

Year 7 Parents' Information Evening

September 2025

A series of horizontal lines in yellow, green, blue, and red, slightly wavy and overlapping, spanning the width of the slide at the bottom.

Information presented by...



Chris Hildrew

Headteacher

Lucy James

Deputy Headteacher

KINDNESS

CURIOSITY

DETERMINATION

This evening we will cover...



- Behaviour and expectations
- Staying safe and healthy
- What's it like to be in Year 7?
- Things to look forward to
- Home/school communication and partnership

We will all be around afterwards to take individual questions



What we have done so far

- Assemblies
- First day
- “Welcome to Churchill” sessions
 - Learning
 - Extra-curricular and participation
 - Wellbeing and managing change

And, coming up...

- Royal Navy Attract
- First Aid
- Tutor Contact Evening



Expectations and behaviour



Learning



We believe in the value of:

- Determined and consistent effort
- A hunger to learn new things
- Challenging ourselves to go beyond our comfort zone
- Viewing setbacks and mistakes as opportunities to learn and grow
- Seeking and responding to feedback
- Encouraging others to succeed

KINDNESS

CURIOSITY

DETERMINATION

Our expectations

Academy Code of Conduct

Kindness

- We are kind to each other and to the environment around us.
- We are polite and follow all instructions when asked.
- We are focused, we listen and we contribute respectfully.



Curiosity

- We are confident to ask questions or ask for guidance when we need it.
- We are always prepared for lessons with a positive attitude to learning.
- We set no limits on what we can achieve.



Determination

- We try our hardest in every task.
- We keep trying when things get difficult.
- We represent our school as positive ambassadors at all times.



Behaviour for Learning Top 5



1. **Strong start:** we arrive on time, line up and enter the classroom calmly
2. **Full attention:** we are immediately silent and face the speaker when called to attention
3. **Full effort:** we apply ourselves with our full effort to the learning tasks set
4. **Full focus:** we focus all our attention on the learning tasks set
5. **Calm finish:** at the end of the lesson we wait in silence for the member of staff to dismiss us

KINDNESS CURIOSITY DETERMINATION

Social Time Top 5



1. Appropriate **language** used in student interactions at social times
2. **Physical interactions** between students are safe and follow the Academy value of kindness
3. Students show **respect for the Academy environment** – litter picked up and put in the bin, toilets and facilities used appropriately
4. Students **do not use mobile phones** on the Academy site from arrival at school until dismissed from class at the end of the day
5. Students present themselves appropriately at all times: hoods down around the site; **uniform** correct

KINDNESS CURIOSITY DETERMINATION



- To make a positive difference

- To set no limits on what we can achieve

KINDNESS

CURIOSITY

DETERMINATION

Social Time Top 5



1. Appropriate **language** used in student interactions at social times
2. **Physical interactions** between students are safe and follow the Academy value of kindness
3. Students show **respect for the Academy environment** – litter picked up and put in the bin, toilets and facilities used appropriately
4. Students **do not use mobile phones** on the Academy site from arrival at school until dismissed from class at the end of the day
5. Students present themselves appropriately at all times: hoods down around the site; **uniform** correct

Behaviour for Learning Top 5



Every lesson, every time

- 1. Strong start:** we arrive on time, line up and enter the classroom calmly
- 2. Full attention:** we are immediately silent and face the speaker when called to attention
- 3. Full effort:** we apply ourselves with our full effort to the learning tasks set
- 4. Full focus:** we focus all our attention on the learning tasks set
- 5. Calm finish:** at the end of the lesson we wait in silence for the member of staff to dismiss us

KINDNESS

CURIOSITY

DETERMINATION

Learning to behave well



- Immediacy
- Certainty
- Consistency

Systems: Rewards



House Points:

- **One House Point:** any positive behaviour in line with the Academy's expectations and values - "I've done more than just avoid getting a behaviour point"
- **Two House Points:** consistent, repeated or significant positive behaviour in line with the Academy's expectations and values
- **Three House Points:** a "WOW" reward for a special contribution to the Academy or positive behaviour which goes over and above expectations, or sets a role model example for others to follow

Classroom behaviour



Any failure to meet expectations results in a behaviour point.

- **Behaviour Point:** serves as your warning. It says “you have not met this expectation. You now need to make sure that you meet my expectations for the remainder of the lesson.”
- Your teacher will support you to get back on track.

Second behaviour point = removal to refocus



- This enables teachers to focus their time and attention on the students who are meeting expectations
- Refocus is a silent working space where students can reflect on their behaviour, and access the curriculum via Google Classroom
- It is designed to remove disruption from the classroom with the aim of achieving disruption-free learning

Rewards thresholds



Level	Milestone	Outcomes
L1 25 Conduct points	Tutor Commendation	E-Certificate from your tutor
L2 75 Conduct points	Head of House Commendation	Certificate from your Head of House
L3 125 Conduct points	Headteacher's Commendation	Certificate from the Headteacher
L4 175 Conduct points	Governor's Commendation	Certificate from the Chair of Governors

KINDNESS

CURIOSITY

DETERMINATION

How are Year 7 doing?



As of Friday, Year 7 looks like this:

- Average house points = 25
- Highest house points = 46
- Average behaviour points = 0.6



KINDNESS

CURIOSITY

DETERMINATION



Uniform, jewellery, equipment



Uniform



- Charcoal grey plain full-length trousers
- If a belt is to be worn, this must be black and suitable for school
- Maroon School Uniform Polo Shirt with House Colour Trim and School Logo
- Black socks only
- Hats, scarves and coats, if worn, should be plain, without logos or patterns. Denim or leather jackets are not permitted.
- Hoodies: Academy hoodies (House PE hoodies, Maroon Academy hoodies, or Grey Year 11 hoodies) are acceptable to wear as part of the Academy's uniform. Hoods must be worn down. Other hoodies (those not issued by the Academy, or "trip" hoodies) are not acceptable and should not be worn to school. ¾ zip tops are suitable alternatives for hoodies.

Shoes



- Plain black flat polishable shoes. Must be all black, with no coloured logos or flashes. Shoes should enclose and protect toes and heels for health and safety reasons. Boots, canvas or fabric shoes or trainers are not allowed. Air Force or similar plain black trainers with uppers that are “polishable” are acceptable as school shoes, as are any plain black polishable shoes. Trainers with fabric uppers, or trainers with white or coloured logos or flashes, are not acceptable.

Jewellery



- Jewellery: students are permitted a watch and a ring. Piercings in the ear and/or nose must be studs only for health and safety reasons. Hoops, rings, dangly, spiked, chain link or spacer style earrings or nose piercings are not permitted. No other piercings are allowed (e.g. tongue or other parts of the body). All piercings must be removed or covered with a plaster when taking part in PE or Dance. All watches of any kind must be removed during exams.
- Make up: make up is not permitted in Years 7 or 8. In Years 9-11 make up, if worn, should be discreet. Nail varnish, false nails and false eyelashes are not permitted.

What if we get it wrong?



- **Incorrect uniform:** offered correct uniform to wear - behaviour point issued for incorrect uniform
- **Incorrect jewellery:** will be confiscated for collection at the end of the day - behaviour point issued for incorrect uniform
- If it cannot be removed (e.g. nails), you will be placed in Refocus until it can be sorted out with home.



If your mobile phone is seen or heard at any time, it will be confiscated and a behaviour point issued.

At social time, you will be sent to time out.

- **“At any time”**: from the moment you arrive until you are dismissed at the end of the day
- **“Mobile phone”**: includes AirPods, headphones etc.
- **“Seen”**: your phone should be completely out of sight. If it is in your pocket you will be asked to put it away out of sight in your bag without a behaviour point.

Equipment



Every day, students are expected to bring:

- Essential Equipment:
 - Two Black pens
 - Two Sharp pencils
 - Rubber
 - Ruler
 - Scientific Calculator (Casio fx-85GTCW preferred)
 - Reading book
 - Timetable
 - Pencil case
- Desirable equipment:
 - One Purple Pen
 - One Green Pen
 - Protractor
 - Pair of compasses
 - Set of coloured pencils
 - Glue stick
 - Set of four highlighters
 - Water bottle (reusable)

Equipment



Every day, students are expected to bring:

- Essential Equipment:

- Two Black pens
- Two Sharp pencils
- Rubber
- Ruler
- Scientific Calculator (Casio fx-85GTCW preferred)
- Reading book
- Timetable
- Pencil case

- Desirable equipment:

- One Purple Pen
- One Green Pen
- Protractor
- Pair of compasses
- Set of coloured pencils
- Glue stick
- Set of four highlighters
- Water bottle (reusable)



Staying safe and healthy



Age Restrictions for Video Games

12

PEGI 12

Games with a PEGI 12 rating are suitable for ages 12 and above.

They may have:

violence of a slightly graphic nature involving fantasy characters

suggestive activities or language

gambling

mild bad language

For example:

Sims

Fortnite

Dragon Ball FighterZ

Super Smash Bros. Ultimate

For further information regarding the video game age restrictions mentioned in this resource, please see the official [PEGI](#) website.



twinkl

16

PEGI 16

Games with a PEGI 16 rating are suitable for ages 16 and above.

They may have:

violence and adult content that looks like real life

bad language

scenes demonstrating the use of tobacco, alcohol or illegal substances

For example:

Marvel's Avengers

Battlefield 2042

Halo Infinite

Marvel's Spider-Man

Age Restrictions for Video Games

18

PEGI 18

Games with a PEGI 18 rating are suitable for ages 18 and above.

They may have:

extreme violence

explicit adult content

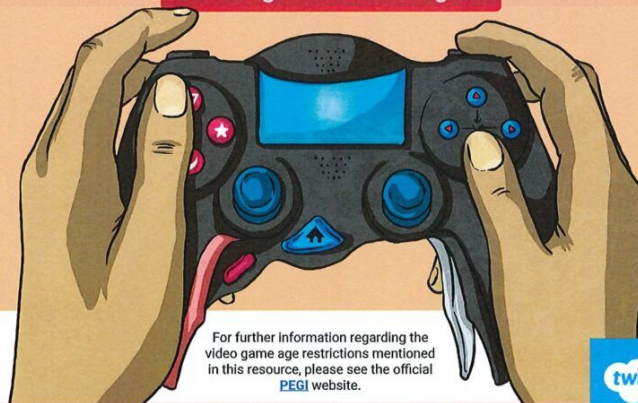
the glamorised use of illegal substances

For example:

Call of Duty: Warzone

Grand Theft Auto V

Far Cry 3 Blood Dragon



For further information regarding the video game age restrictions mentioned in this resource, please see the official [PEGI](#) website.

twinkl





Age Restrictions for Social Media Platforms

13

is the minimum age for account holders on these social media sites and apps.



Twitter



Facebook



Instagram



Pinterest



Messenger



Tik Tok



Discord



Snapchat



Twitch



Yubo



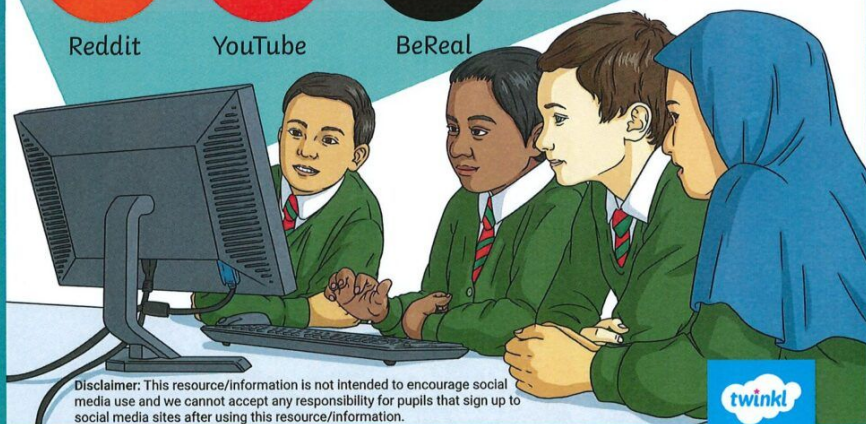
Reddit



YouTube



BeReal



Disclaimer: This resource/information is not intended to encourage social media use and we cannot accept any responsibility for pupils that sign up to social media sites after using this resource/information.

twinkl

Age Restrictions for Social Media Platforms

16

is the minimum age for account holders on these social media sites and apps.



WhatsApp



Vimeo



Telegram



Nintendo Online Account



Tumblr



18

is the minimum age for account holders on these social media sites and apps.



Xbox Live Account



PSN Online Account



Disclaimer: This resource/information is not intended to encourage social media use and we cannot accept any responsibility for pupils that sign up to social media sites after using this resource/information.

twinkl

Friendships and Bullying



- The majority of fallings out and bullying concerns are occurring over social media and continue in school.
- Sometimes they are within a learning group - for this reason we **do not encourage** you to allow your children to set up or join class social media groups
- Frequently they are cross year group - we encourage you to monitor who your child is accepting into social media groups
- Students are tech savvy and quick to create and post content - they frequently do not stop to think if the content is kind or how it could be misinterpreted.

What is sexting / “nudes”/youth produced sexual imagery?



The sending of provocative or sexual photos, images, messages or videos using a mobile phone or posting online.



KINDNESS

CURIOSITY

DETERMINATION

The Law



If you're under 18 it's illegal to:

Take - INCLUDING SOMEONE TAKING IMAGES OF THEMSELVES

Hold - HAVE AN INDECENT IMAGE OF SOMEONE UNDER 18)

Share - (AN INDECENT IMAGE TO SOMEONE UNDER 18 TO ANOTHER PERSON)

An 'indecent' picture of yourself, or to look at or share someone else's. If it's naked, a topless girl or a boy's picture that contains genitals or sex acts it will be 'indecent' including provocative underwear shots.



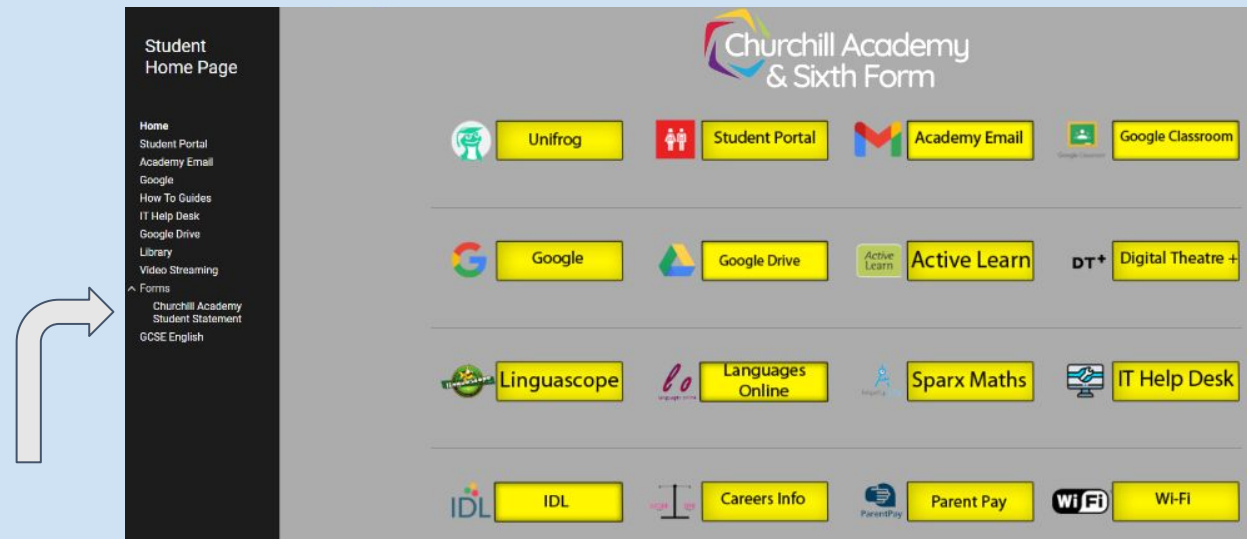
DON'T FORGET, IT'S NOT JUST ADULTS
WHO GO ON
THE SEX OFFENDERS REGISTER

KINDNESS

CURIOSITY

DETERMINATION

How to let us know about problems



Use the online reporting form

KINDNESS

CURIOSITY

DETERMINATION

The reporting form

A screenshot of a web form titled "Churchill Academy Student Statement". The form is set against a light purple background. It includes a header with the title and a brief instruction: "You are completing this form to give us information about an incident or problem that you know something about, or because something has happened to you that you need to share with us." Below this is a login section with the email "fd@churchill-academy.org" and a "Switch accounts" link. A red asterisk indicates a required question. The form has several input fields: "Email *" with a checkbox to "Record fd@churchill-academy.org as the email to be included with my response"; "Please give your full name *" with a text input field; "Student ID number *" with a text input field; and "Which House are you in? *" with a dropdown menu currently showing "Choose".

If they are completing at home encourage them to give detail and share what they have already done to move away from the situation (if relevant)

KINDNESS

CURIOSITY

DETERMINATION

6 Benefits of a Good Night's Sleep

by @inner_drive | www.innerdrive.co.uk

 Better Concentration

 Better Memory and Recall

 Aids Creativity

 Helps You Make Better Decisions

 Reduced Focus on Negative Things



Stronger Immune System

9 Common Sleep Mistakes

by @inner_drive | www.innerdrive.co.uk



1

Watching TV right up until bedtime



2

Long naps in the day



3

Killing time online



4

Different bedtimes each night



5

Drinking tea, coffee, cola or energy drinks late at night



6

Waiting to fall asleep before going to bed



7

Being on your phone in bed



8

Staying in bed when unable to sleep



9

Overthinking tomorrow



The school day



8:35-9:00	Tutor / Assembly
9:00-10:00	Period 1
10:00-11:00	Period 2
11:00-11:20	Break
11:20-12:20	Period 3
12:20-13:20	Period 4
13:20-14:05	Lunch
14:05-15:05	Period 5



KINDNESS

CURIOSITY

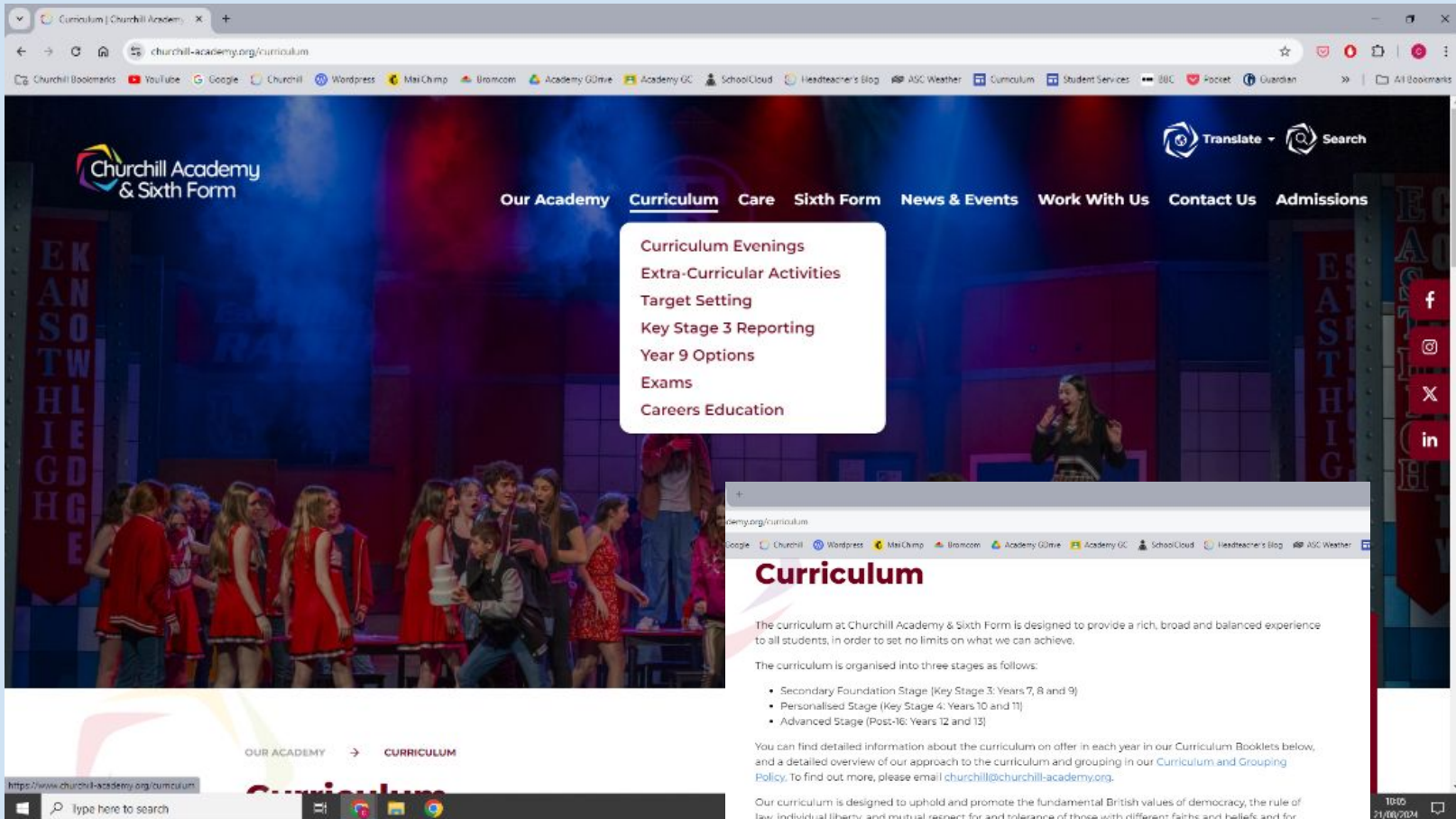
DETERMINATION

The Year 7 Curriculum



- English 7 lessons
- Maths 6 lessons
- Science 6 lessons
- Design Technology 4 lessons
- Performing Arts 5 lessons
- PE 4 lessons
- Art 4 lessons
- Geography 3 lessons
- History 3 lessons
- IT/Computing 1 lesson
- RE 2 lessons
- PSHE 1 lesson
- Languages 4 lessons

Information about curriculum content for each subject is available on the [Academy website](#)



KINDNESS

CURIOSITY

DETERMINATION

Groupings



- **Learning groups**

- In Year 8 and 9, learning groups are rearranged so that we can effectively deliver our curriculum and to ensure that learning groups have a full balance of students based on a wide range of factors
- Learning groups are mixed attainment groups

- **Practical learning groups**

- Smaller mixed attainment groups for more practical lessons

- **Maths groupings**

- Students will start off year 8 in mixed attainment groups
- Setting begins in Term 5 based on students' attainment in the subject to allow the curriculum to be personalised

Baseline testing

MidYIS Testing

- A national standardised test
- Done online
- Adaptive questions in Vocabulary, Mathematics, Non-Verbal, Skills
- Takes up to one hour

Select the word or phrase with the closest meaning.

generous

expressive

giving

winding

exit

The pie chart shows the results of a survey of 160 students.



How many students run?

5

10

15

20

Select the shape from the right that has been cut to create this cross section.

Select 'NO MATCH' if the cross section does not have a matching shape.



Select the matching numbers.

958473

954873

95473

958473

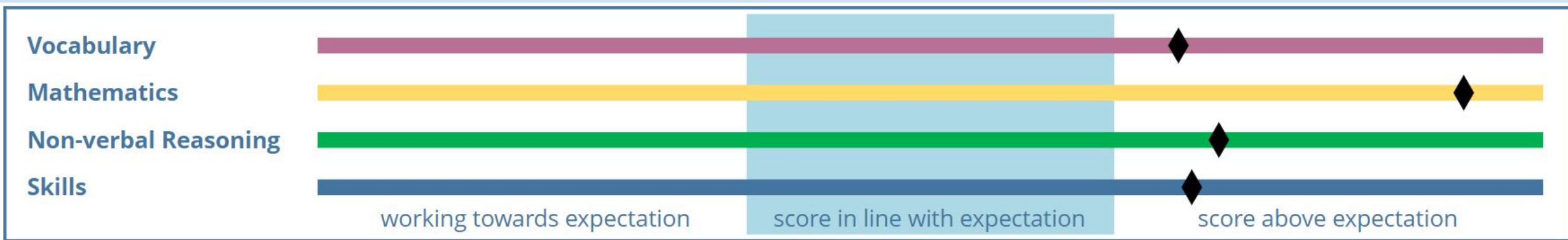
958373

KINDNESS

CURIOSITY

DETERMINATION

The results



- Teachers will always be cautious of making decisions based on a single assessment
- They will use this information, together with other sources of evidence such as examples of work, to build up a more general overview of how students perform

Reports - Scaled Scores

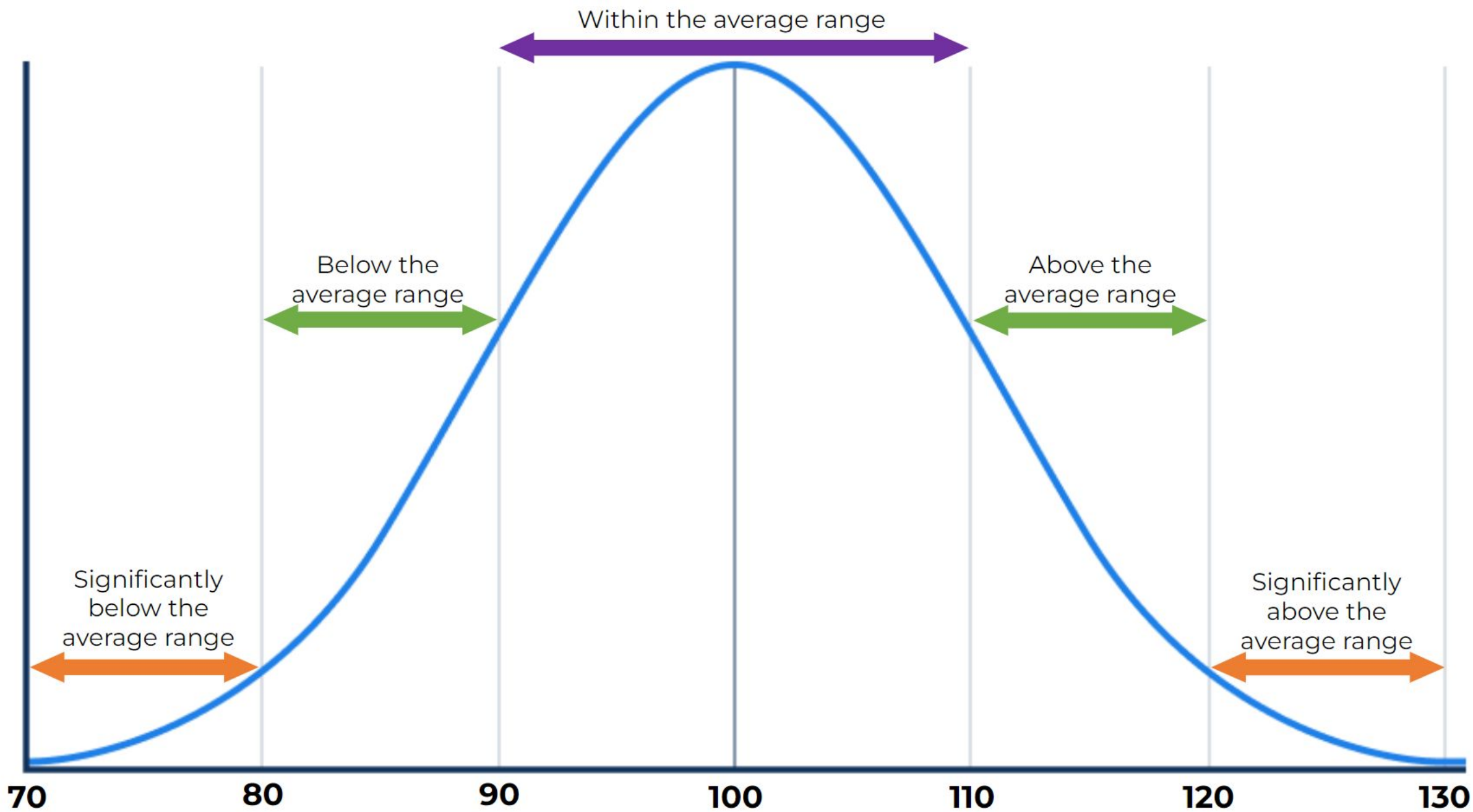


- Your child will have been assessed in each subject
- The scaled score is a summary of that assessment
- It may be based on one test or task, or a number
- It is comparable across all subjects
- This is the same way that Key Stage 2 SATs scores are generated.

Scaled Scores



- The maximum possible scaled score is 130
- The average scaled score is 100
- The lowest possible scaled score is 70



Effort



A student currently making Good effort...

- **Good effort means being a responsible and hardworking student who tries their best all of the time.**
- Shows a good interest in their learning and is attentive and focused;
- Responds well to feedback and targets and completes work to the expected standard;
- Shows determination and is willing to persevere when things are difficult;
- Takes responsibility for their work and is well organised;
- Willingly does all that is asked of them and sometimes more.

KINDNESS

CURIOSITY

DETERMINATION

Effort



A student currently making excellent effort...

- **Excellent effort means being committed to getting the most out of all learning opportunities available. It is what all students should aim for.**
- Excellent participation in the lesson at all times, and is fully engaged;
- Actively seeks and responds to feedback on how to improve the quality of their work;
- Shows great determination and views setbacks and mistakes as opportunities to learn and grow;
- Manages their time and work efficiently and is an excellent role model who is highly disciplined;
- Uses their initiative in a range of situations without always having to be told what to do;
- Shows dedication and enthusiasm for learning at all times.

KINDNESS

CURIOSITY

DETERMINATION

Effort



A student currently making insufficient effort...

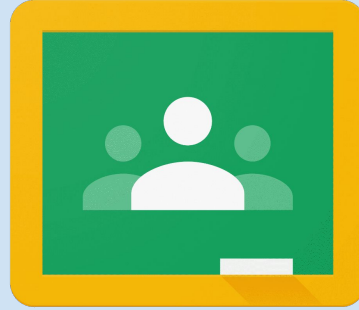
- **Insufficient effort means that a student is probably doing most of what they are supposed to do but is failing to push themselves or make the most of the opportunities available.**
- Often participates in lessons and is generally focused and well behaved;
- May not try hard enough to improve their work after feedback;
- Is usually well organised but does the minimum that is asked of them and not much more;
- Might make a Good level of effort some of the time but this is not consistent.

Effort



A student currently making poor effort...

- **Poor effort means that a student needs support or intervention to become a more responsible learner.**
- Makes little effort to be involved in the lesson and may disrupt the learning of others instead;
- Fails to act on feedback provided and as a result may not make much progress;
- Is not interested in being challenged and will give up without really trying;
- Spends an inadequate amount of time on tasks and may produce poor work as a result;
- Takes little or no responsibility for their own learning or behaviour;
- Effort is frequently a cause for concern.



Google Classroom



Using Google Classroom

Home

Calendar

Enrolled

To do

Year 8 Science 25-26

History - Year 8

2025_8HAV-Sp/La1

2025_8HAV/Ps1

2025_8A/CPE2

2025_8HAV/En1

2025_8HAV/Ad1

2025_8HAV/Hi1

2025_8HAV/Gg1

2025_8B/Dt3

2025_8HAV/It1

2025_8HAV/RE1

Year 8 Science 25-26

SAW Two

S



History - Year 8

SAW One

S



2025_8HAV-Sp/La1

Catherine Thomas

C

Due today
Vocabulary learning homework 1



2025_8HAV/Ps1

Thom Knock

T



2025_8A/CPE2

Lewis Matthews

L



2025_8HAV/En1

Sue Dibble

S



2025_8HAV/Ad1

Kaja Brockington

K

Due Sunday
Open Evening - Art Volunteers



2025_8HAV/Hi1

Nathan Waller

N



2025_8HAV/Gg1

Jon Bevan

J

Due Monday
Homework 1: ATLAS AND MAP
SKILLS READING TASK

2025_8B/Dt3

Naomi Briffitt

N



2025_8HAV/It1

Peter O'Connor

P



2025_8HAV/RE1

Katherine Hoare

K



Guardian Summaries



Parents/carers cannot view Google Classroom directly

If “invited” to a Google Classroom Guardian Summary, you will receive an email (usually weekly) giving you a summary of what has been posted in each Google Classroom

This includes homework tasks, deadlines, notices etc.

Beyond the curriculum



SESSION	MONDAY	TUESDAY	WEDNESDAY	THURSDAY	FRIDAY
Lunchtime 1.30-2pm	<ul style="list-style-type: none"> KS3 Badminton- Sports Hall- HJ 	<ul style="list-style-type: none"> KS3 Table Tennis- Gym-TMS (sign up) 	KS4 Table Tennis- Gym- LEM(sign up) <ul style="list-style-type: none"> KS4 Basketball- Sports Hall- TB 	<ul style="list-style-type: none"> KS4 Badminton-SportsHall- GAD 	No Clubs
Afterschool 3.10-4.10pm	No Clubs- PE Department Meetings	<ul style="list-style-type: none"> Y7 Netball- Courts LDH + KA KS4 Hockey- 3G -HJ KS4 Table Tennis Club - Gym - TB KS4 GCSE Badminton- Sports Hall - AYB KS4 Rugby- Field- JMR+GAD 	KS5 Fixtures During P5 <ul style="list-style-type: none"> KS4 Basketball- Sports Hall- TB Y8+9 Netball- Courts LDH KS3 Girls Football 3G KS3 Football- Field LEM+GAD Multi Sports TMS (sign up only)3G 	<ul style="list-style-type: none"> KS3 Table Tennis- Gym LEM KS3 Basketball- Sports Hall- TB 	No Clubs

Beyond the curriculum



Monday

Activity	For whom	Time	Where	Staff
Orchestra	All years & staff	13:20	Music Dept.	Mr Spencer
Warhammer Painting Club	All years & staff	13:20	W5	Mr Rolph
Dance Club	Year 8	13:30	Dance Studio	Mrs Lippe
Rubik Cube Club	Year 7 & 8	13:20	H5	Mrs Darwin
Inclusion and Diversity	All years	13:20	L2	Mrs Crocker
Pokémon TCG	All	13:20	AD5	Mr Garrett
Homework Club	Priority Learner	13:20	L8	Mrs Jones

Tuesday

Activity	For whom	Time	Where	Staff
Senior Choir	Years 10-13	13:20	Music Dept.	Mr Bryant
LIBRA Club	All years	13:30	H9	Miss Matter
Chess Club	All years	13:30	W6	Mr Skeen
Dance Live!	Invitation Only	15:20	H16	Mrs Lippe

Wednesday

Activity	For whom	Time	Where	Staff
Woodwind Group	All flute and clarinet players	08:35	Music Dept.	Mrs Parfitt
Concert Band	All years	13:20	Music Dept.	Mrs Corke
Guitar Group	All guitarists	13:20	Music Dept.	Mr Davey
Korean Club	All years	13:30	L6	Mrs Howe
Pokémon TCG	All	13:20	AD5	Mr Garrett
Show Rehearsal – We Will Rock You		15:05		
Study Skills	Priority Learner	13:20	L8	Mrs Graham

KINDNESS CURIOSITY DETERMINATION

Beyond the curriculum



Thursday

Activity	For whom	Time	Where	Staff
KS3 Choir	Years 7-9	13:20	Music Dept.	Mr Bryant
Debate Club	All years	13:20	S9	
Dance Company	Year 9	13:30	Dance Studio	Mrs Murphy
Pokémon TCG	All	13:20	AD5	Mr Garrett
String Group	All string players	15:05	Music Dept.	Mr Bryant
Show Rehearsal – We Will Rock You		15:05		

Friday

Activity	For whom	Time	Where	Staff
Brass Monkeys	All brass players	11:00	Music Dept.	Mr Sansom
Soul Band	All years	13:20		Mr Spencer
Dance Club	Year 7	13:30	Dance Studio	Miss Cook
Magic: The Gathering	All years	13:20	W8	Mr Gale

KINDNESS

CURIOSITY

DETERMINATION

To look forward to...



KINDNESS

CURIOSITY

DETERMINATION

The Churchill Charter



The Churchill Charter is our promise that we will enrich the curriculum by providing students with the opportunity to challenge themselves and engage in a wide range of extra and co curricular activities.

By the time students have finished year 7 they will have gained their “Churchill Charter” as they will have:

- Been trained as a student ambassadors
- Taken part in the Churchill Year 7 sponsored walk
- Had a minimum of 5 full days of extracurricular activity (through the Activities Week).
- Represented your House in a House competition.
- Know how to record activities, skills and create a career library on Unifrog
- Completed a personality profile on Unifrog

KINDNESS

CURIOSITY

DETERMINATION

The Churchill Charter



Bronze:

- Taken part in at least one House match
- Carried out at least 2 ambassador jobs
- Represented your House at sports day through participation or organisation
- Attended an extra or co-curricular club for 3 weeks.
- Achieved your Head of House commendation
- Recorded at least 5 skills on Unifrog
- Completed a Unifrog skills profile
- Community involvement

Silver:

- Received your Headteacher's Commendation
- Played in a House Match or been part of a school performance
- Had an overnight stay on one of the school's residential trips
- Recorded 10 skills on Unifrog
- Have generated a careers library on Unifrog

Gold:

- Received your Governor's Commendation
- Been on a school trip
- Be part of the House council
- Represented the school
- Recorded 15 different skills on Unifrog

Reading & The Library



- The Library is open all break and lunch times and after school Tuesday, Wednesday and Thursday.
- Year 7 have a library lesson each fortnight and keep a reading diary as part of these lessons - reading is rewarded.
- Students must carry a reading book - reading is a feature of tutor time every morning.
- The academy library can support a wide range of readers. If you think your child would benefit from some extra support please contact our librarian Sue Dibble.

Communication



- First point of contact is your child's tutor
- You can :-
 - Email / or phone your child's tutor and we aim to respond within 2 working days
 - Email teachers directly
 - Email the academy on churchill@churchill-academy.org
- If your child requires a **Health Care Plan** please contact the nurse, nurse@churchill-academy.org
- Healthcare plans are part of the home/school partnership - we aim to review them annually and we do this by re-sending you the plan and asking for a return to confirm no updates or any changes

Other staff



- To make contact with other staff please call reception
 - Head of House
 - Senior Team
 - SENCo
 - Year 7 Pastoral Support Worker - Mr Cross

For Head of House or any other member of staff please phone reception and ask for an appointment. If the member of staff is available they will try and help there and then but please do not assume that they are available.

MCAS / The Portal

A screenshot of the 'mychildatschool.com' parent login portal. The page features a blue header with the site's logo. Below the header is a blue button labeled 'PARENT LOGIN'. The main form area includes an 'Email' input field with an envelope icon, a 'Password' input field with a lock icon, and a checkbox for 'Remember Email Address'. A 'Reset Password' link is located to the right of the password field. A large blue 'Login' button is positioned below the form. At the bottom, there are two app store badges: 'Available on the App Store' and 'Get it on Google play'. The footer includes the version number 'v5.2023.8657.29981' and the text 'Powered by Bromcom'.

MCAS is available in an internet browser (<https://www.mychildatschool.com/MCAS/MCSParentLogin>) or via the MCAS app in the App Store or Google Play.

To log in, you need your email that you have registered with the school and a password.

KINDNESS

CURIOSITY

DETERMINATION



Hudson, Willow



Dashboard



Data Collection Form



Announcements



Attendance



Behaviour



Exam Results



Exam Timetables



Reports



Timetable



Academic Calendar

Attendance

Is Willow at school?

More

Period	Subject	Mark
AM	Tutor Group	?
PM	Tutor Group	?

Classes

Willow's Classes

Class Name	Class Details	Attendance
13A/Assem1	Assembly Mr R Morgan rm@churchill-academy.org	0%
13A/Pe2	Physical Education Mr T Jones tj@churchill-academy.org	0%
13A/Tp1	Specialist Tutor Program Mr S Joyce shj@churchill-academy.org	0%
13B/Et1	English Literature Mr D Grimmett dhg@churchill-academy.org	100%
13C/Py1	Psychology Miss H Sheppard hs@churchill-academy.org	100%
13D/Sk1	Social & Caring Ms V Bogonosov vb@churchill-academy.org	100%

Announcements

More

No Announcements data found

Reports

Willow's progress checks

More

Published Report

- 24/06/2022 12 DC3 and UCAS (2021 - 2022 Term 6 21/22)
- 22/03/2022 017394-Hudson-Willow-12 DC2 Attainment, Effort and Mocks (2021 - 2022 Term 4 21/22)
- 22/03/2022 017394-Hudson-Willow-12 DC1 Effort Grades Report (2021 - 2022 Term 4 21/22)

Behaviour

Willows recent behaviour

More

No Behaviour data found

For MCAS queries please email mcas@churchill-academy.org

KINDNESS

CURIOSITY

DETERMINATION

Key Dates 2025-26



2 October	Tutor contact evening 4:30-5:30pm
27 November	Academy Careers Convention
2 & 3 December	Academy Christmas Concert
Late January	Report 1 issued
May	Report 2 issued
4 June	Year 7 Parents' Evening
w/c 22 June	Assessment Week (core subjects)
w/c 13 July	Activities Week

Thank you

We will be around to answer any questions you may have

