

Year 7 Parents' Information Presentation

September 2023





- Chris Hildrew Headteacher
- Frances Dawes Deputy Head
- Lucy James Deputy Head
- Lorraine McKay Assistant Head and
Designated Safeguarding Lead

This evening we will cover...



- What's it like to be in Year 7?
- Things to look forward to
- Home/school communication and partnership
- Behaviour and expectations
- Staying safe and healthy

We will all be around afterwards to take individual questions



Being in Year 7



What does a day look like ?



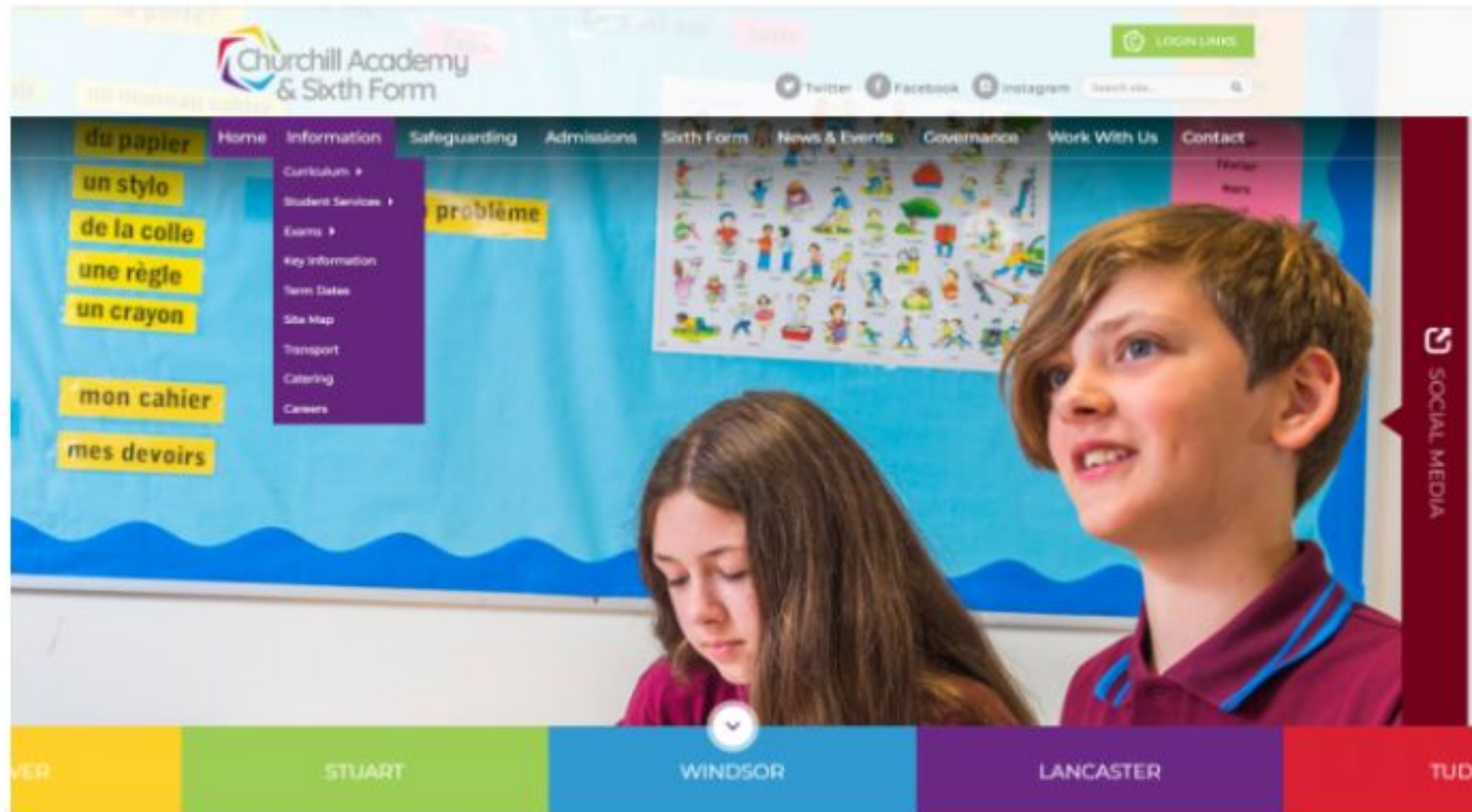
- Students arriving on coach loop are greeted by a senior member of staff
- Students can go to Windsor Kitchen to buy breakfast
- Academy Skills Centre (ASC) is available at break for students finding it hard to settle and Year 7 can always pop up to Student Services which is located above the library with any concerns.
- The library is open around 8.30 am students can book a computer for after school
- Morning tutor time is 25 minutes: uniform and equipment check, Daily Notices and a rota of activities including silent reading, house activities, discussions with individual students and sharing information
- There is a house assembly once a week

Year 7 Curriculum



- Maths
- English
- Science
- MFL (French or Spanish)
- History
- Geography
- RE
- Technology
- Performing Arts
- Art
- ICT
- PE
- PSHE

- Information about what is learnt is available [on the website](#)



KINDNESS

CURIOSITY

DETERMINATION

Year 7

Beyond the curriculum



WEEK 2 25th September

MONDAY 25th	Y9 Basketball 1.30 - 2.00 Sports Hall Mr Barlow								Table Tennis KS5 1.30 - 2.00 Gym Mr Hayne							
TUESDAY 26th	Y7 Netball Courts Miss Heyworth	Y8 Rugby Fixture at HPA 3-5:30pm Mr Hayne	Y7 Rugby Field Mr Love	Y8 Rugby Field Mr Davey	Y9+10 Badminton Sports Hall Mrs Blackburn	Y11 Hockey Match at Sidcot 3-5:30pm Miss James	Y11 Boys Rugby Field Mr Hayne	Y11 Hockey 3G Mrs Taylor								
WEDNESDAY 27th	Y10 Basketball Lunchtime Sports Hall Mr Barlow	Y7, 8 + 9 Netball V Sidcot at Churchill 4 - 5:15pm Miss James Miss Heyworth	Y9+Y10 Basketball 3.10 - 4.10 Sports Hall Mr Barlow				OPEN EVENING									
THURSDAY 28th	INSET DAY NO CLUBS															

KINDNESS

CURIOSITY

DETERMINATION

Beyond the curriculum



Plus:

- Chess
- Rubik's Cube
- Library
- House competitions

MUSIC REHEARSAL SCHEDULE			
Monday		Thursday	
1:20pm	Big Orchestra	1:20pm	KS3 Girls' Choir
1:20pm	Guitar Group	1:20pm	String Group
Tuesday		3:05pm	Chamber Choir
1:20pm	KS3 Boys' Choirs	Friday	
Wednesday		11:00am	Brass Group
8:30am	Flute/Clarinet Group	1:20pm	Percussion Group
1:20pm	Concert Band	1:20pm	Theory Club
3:05pm	Orchestra	3:05pm	Soul Band

KINDNESS CURIOSITY DETERMINATION

To look forward to...



KINDNESS

CURIOSITY

DETERMINATION

The Churchill Charter



The Churchill Charter is our promise to you that we will enrich your curriculum by providing you with the opportunity to challenge yourselves and engage in a wide range of extra and co curricular activities.

By the time you have finished year 7 you will have gained you “Churchill Charter” as you will have:

- Been trained as a student ambassadors
- Taken part in the Churchill Year 7 sponsored walk
- Had a minimum of 5 full days of extracurricular activity (through the Activities Week).
- Represented your House in a House competition.
- Know how to record activities, skills and create a career library on Unifrog
- Completed a personality profile on Unifrog

KINDNESS

CURIOSITY

DETERMINATION

The Churchill Charter



Bronze:

- Taken part in at least one House match
- Carried out at least 2 ambassador jobs
- Represented your House at sports day through participation or organisation
- Attended an extra or co-curricular club for 3 weeks.
- Achieved your Head of House commendation
- Recorded at least 5 skills on Unifrog
- Completed a Unifrog skills profile
- Community involvement

Silver:

- Received your Headteacher's Commendation
- Played in a House Match or been part of a school performance
- Had an overnight stay on one of the school's residential trips
- Recorded 10 skills on Unifrog
- Have generated a careers library on Unifrog

Gold:

- Received your Governor's Commendation
- Been on a school trip
- Be part of the House council
- Represented the school
- Recorded 15 different skills on Unifrog

Churchill Academy Reading Strategy and The Library



- The Library is open all break and lunch times and after school Tuesday, Wednesday and Thursday.
- Year 7 have a library lesson each fortnight and keep a reading diary as part of these lessons - reading is rewarded.
- The academy library can support a wide range of readers. If you think your child would benefit from some extra support please contact our librarian Sue Dibble.
- There is more help and advice with book lists available and we will email this to Year 7 Parents shortly.
- Halloween Cake Sale in October
- There will be an author visit in February - Jennifer Killick

Communication



- First point of contact is your child's tutor
- You can :-
 - Email / or phone your child's tutor and we aim to respond within 2 working days
 - Email teachers directly
 - Email the academy on churchill@Churchill-academy.org
- If your child requires a **Health Care Plan** please contact the nurse, Biz Hembrow: eh@Churchill-academy.org
- Healthcare plans are part of the home/school partnership - we aim to review them annually and we do this by re-sending you the plan and asking for a return to confirm no updates or any changes

Other staff



- To make contact with other staff please call reception
 - Head of House -
 - Senior Team
 - SENCo
 - Year 7 Pastoral Support Worker - Mr Cross
 - Ms Dawes - Deputy Head - available Weds 3.30- 5.30pm book 15 minute appointment through gwa@churchill-academy.org

For Head of House or any other member of staff please phone reception and ask for an appointment. If the member of staff is available they will try and help there and then but please do not assume that they are available.

MCAS / The Portal

A screenshot of the 'mychildatschool.com' parent login portal. The page features a blue header with the site's logo. Below the header is a 'PARENT LOGIN' section with a blue button. Underneath are input fields for 'Email' (with an envelope icon) and 'Password' (with a lock icon). A checkbox labeled 'Remember Email Address' and a 'Reset Password' link are also present. A large blue 'Login' button is at the bottom of the login section. At the very bottom of the page, there are two black buttons: 'Available on the App Store' and 'Get it on Google play'. The footer includes the version number 'v5.2023.8657.29981' and the text 'Powered by Bromcom'.

MCAS is available in the internet browser

(<https://www.mychildatschool.com/MCAS/MCSParentLogin>) or via the MCAS app in the App Store or Google Play.

To log in, you need your email that you have registered with the school and a password.

KINDNESS

CURIOSITY

DETERMINATION



my child school.com Churchill Academy and Sixth Form

Dashboard Homepage and Launchpad

YOU ARE HERE: Dashboard

Attendance
Is Willow at school?

Period	Subject	Mark
AM	Tutor Group	?
PM	Tutor Group	?

Announcements
No Announcements data found

Reports
Willow's progress checks

Published	Report
24/06/2022	12 DC3 and UCAS (2021 - 2022 Term 6 21/22)
22/03/2022	017394-Hudson-Willow-12 DC2 Attainment, Effort and Mocks (2021 - 2022 Term 4 21/22)
22/03/2022	017394-Hudson-Willow-12 DC1 Effort Grades Report (2021 - 2022 Term 4 21/22)

Behaviour
Willow's recent behaviour

No Behaviour data found

Classes
Willow's Classes

Class Name	Class Details	Attendance
13A/Assem1	Assembly Mr R Morgan rm@churchill-academy.org	0%
13A/Pe2	Physical Education Mr T Jones tj@churchill-academy.org	0%
13A/Tp1	Specialist Tutor Program Mr S Joyce shj@churchill-academy.org	0%
13B/Et1	English Literature Mr D Grimmett dng@churchill-academy.org	100%
13C/Py1	Psychology Miss H Sheppard hs@churchill-academy.org	100%
13D/Sk1	Social & Caring Ms V Bogonosov vb@churchill-academy.org	100%

Hudson, Willow

- Dashboard
- Data Collection Form
- Announcements
- Attendance
- Behaviour
- Exam Results
- Exam Timetables
- Reports
- Timetable
- Academic Calendar

For MCAS queries please email mcas@churchill-academy.org

KINDNESS

CURIOSITY

DETERMINATION

Key Dates 2023-2024



w/c 2 October	MidYIS Test
23 November	Academy Careers Convention, 6.00-8.00pm
28 & 29 Nov	Academy Christmas Concerts, Playhouse WsM, 7.00pm
January	Report 1 Issued
w/c 25 March	Internal Exams Week
May	Report 2 Issued
20 June	Parents' Evening, Academy site, 4.00-7.00pm
w/c 8 July	Activities Week



Expectations and behaviour



Learning



We believe in the value of:

- Determined and consistent effort
- A hunger to learn new things
- Challenging ourselves to go beyond our comfort zone
- Viewing setbacks and mistakes as opportunities to learn and grow
- Seeking and responding to feedback
- Encouraging others to succeed

Our expectations

Academy Code of Conduct

Kindness

- We are kind to each other and to the environment around us.
- We are polite and follow all instructions when asked.
- We are focused, we listen and we contribute respectfully.



Curiosity

- We are confident to ask questions or ask for guidance when we need it.
- We are always prepared for lessons with a positive attitude to learning.
- We set no limits on what we can achieve.



Determination

- We try our hardest in every task.
- We keep trying when things get difficult.
- We represent our school as positive ambassadors at all times.



Behaviour for Learning Top 5



1. **Strong start:** we arrive on time, line up and enter the classroom calmly
2. **Full attention:** we are immediately silent and face the speaker when called to attention
3. **Full effort:** we apply ourselves with our full effort to the learning tasks set
4. **Full focus:** we focus all our attention on the learning tasks set
5. **Calm finish:** at the end of the lesson we wait in silence for the member of staff to dismiss us

KINDNESS CURIOSITY DETERMINATION

Social Time Top 5



1. Appropriate **language** used in student interactions at social times
2. **Physical interactions** between students are safe and follow the Academy value of kindness
3. Students show **respect for the Academy environment** – litter picked up and put in the bin, toilets and facilities used appropriately
4. Students **do not use mobile phones** on the Academy site from arrival at school until dismissed from class at the end of the day
5. Students present themselves appropriately at all times: hoods down around the site; **uniform** correct

KINDNESS CURIOSITY DETERMINATION



- To make a positive difference

- To set no limits on what we can achieve

KINDNESS

CURIOSITY

DETERMINATION

Effort



A student currently making Good effort...

- **Good effort means being a responsible and hardworking student who tries their best all of the time.**
- Shows a good interest in their learning and is attentive and focused;
- Responds well to feedback and targets and completes work to the expected standard;
- Shows determination and is willing to persevere when things are difficult;
- Takes responsibility for their work and is well organised;
- Willingly does all that is asked of them and sometimes more.

Effort



A student currently making excellent effort...

- **Excellent effort means being committed to getting the most out of all learning opportunities available. It is what all students should aim for.**
- Excellent participation in the lesson at all times, and is fully engaged;
- Actively seeks and responds to feedback on how to improve the quality of their work;
- Shows great determination and views setbacks and mistakes as opportunities to learn and grow;
- Manages their time and work efficiently and is an excellent role model who is highly disciplined;
- Uses their initiative in a range of situations without always having to be told what to do;
- Shows dedication and enthusiasm for learning at all times.

KINDNESS CURIOSITY DETERMINATION

Effort



A student currently making insufficient effort...

- **Insufficient effort means that a student is probably doing most of what they are supposed to do but is failing to push themselves or make the most of the opportunities available.**
- Often participates in lessons and is generally focused and well behaved;
- May not try hard enough to improve their work after feedback;
- Is usually well organised but does the minimum that is asked of them and not much more;
- Might make a Good level of effort some of the time but this is not consistent.

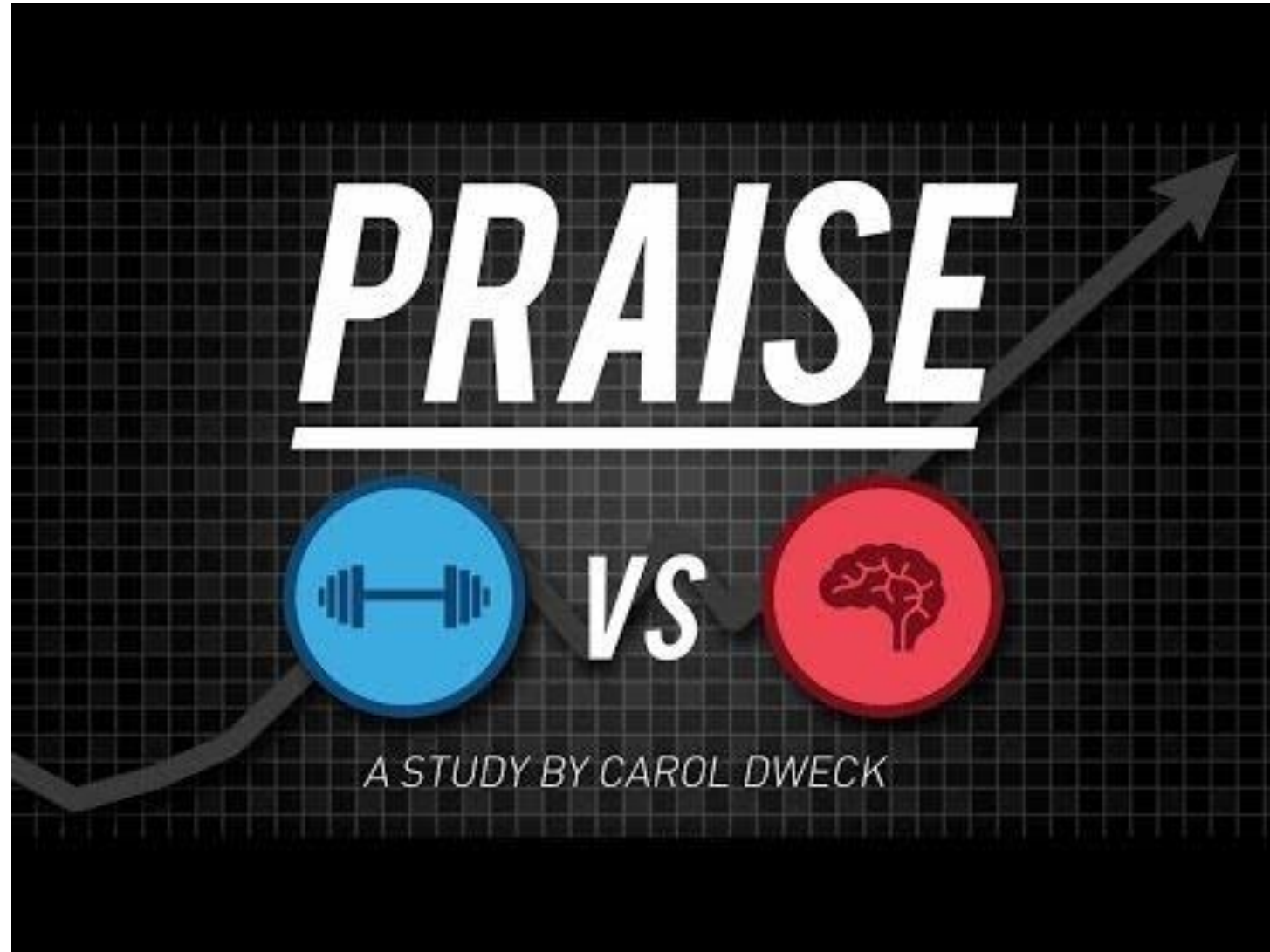
Effort



A student currently making poor effort...

- **Poor effort means that a student needs support or intervention to become a more responsible learner.**
- Makes little effort to be involved in the lesson and may disrupt the learning of others instead;
- Fails to act on feedback provided and as a result may not make much progress;
- Is not interested in being challenged and will give up without really trying;
- Spends an inadequate amount of time on tasks and may produce poor work as a result;
- Takes little or no responsibility for their own learning or behaviour;
- Effort is frequently a cause for concern.

How can you help?



KINDNESS

CURIOSITY

DETERMINATION



Behaviour



Systems: Rewards



House Points:

- **One House Point:** any positive behaviour in line with the Academy's expectations and values - "I've done more than just avoid getting a behaviour point"
- **Two House Points:** consistent, repeated or significant positive behaviour in line with the Academy's expectations and values
- **Three House Points:** a "WOW" reward for a special contribution to the Academy or positive behaviour which goes over and above expectations, or sets a role model example for others to follow

Rewards thresholds



Level	Milestone	Outcomes
L1 25 Conduct points	Tutor Commendation	E-Certificate from your tutor
L2 75 Conduct points	Head of House Commendation	Certificate from your Head of House
L3 125 Conduct points	Headteacher's Commendation	Certificate from the Headteacher
L4 175 Conduct points	Governor's Commendation	Certificate from the Chair of Governors

KINDNESS

CURIOSITY

DETERMINATION

Systems: classroom behaviour



Any failure to meet expectations results in a behaviour point.

- **Behaviour Point:** serves as your warning. It says “you have not met this expectation. You now need to make sure that you meet my expectations for the remainder of the lesson.”
- Your teacher will support you to get back on track.

Second behaviour point = Refocus



- You go straight there
- Check in your bag and your mobile phone
- Refocus is a silent working space
- You will reflect on your behaviour
- You will access to curriculum via Google Classroom
- The aim is to reduce the risk of you coming back

Communication home



If a student is sent to Refocus, the member of staff who sent the student will contact home to explain what has happened.

Our aim is to achieve **disruption free learning.**

KINDNESS

CURIOSITY

DETERMINATION

How to support this at home



- Support the Academy with your children
- Raise any issues with us via tutor
- Make sure your child leaves the house with correct uniform and equipment
- Celebrate successes
- Learn from setbacks

Social Time: time-out detention



- No warning
- Any breach of social time top 5, values, or respect = straight to Time-Out
- Before school/between lessons: next social time
- In social time: go immediately

Time out will be in S9 - just opposite Refocus

Access from the outside door only

Examples of

- running indoors;
- shouting indoors;
- being out of bounds;
- mobile phone / airpods / earbuds seen or heard (visible item confiscated);
- dropping litter/throwing food;
- inappropriate language or attitude;
- eating or drinking in banned areas;
- not cleaning away litter when asked;
- hitting or kicking school property;
- not keeping hands and feet to yourself (including pushing, shoving, play-fighting etc).

Serious incidents



Serious incidents may result in a full day in Refocus - no matter whether you have been before or not - or you may be suspended or permanently excluded from school.

Examples of “serious incidents” include (but are not limited to): swearing at a member of staff, behaviour that poses a Health & Safety risk, aggressive/ rude attitude, bullying, discrimination (including racism, homophobia, transphobia), vandalism, truanting, gambling, threatening behaviour, refusal to follow instructions, fighting or recording a fight, dangerous or reckless behaviour, physical assault, sexual harassment or assault, possession of drugs, alcohol, weapons.

KINDNESS

CURIOSITY

DETERMINATION

Punctuality



- You are expected to be at your lesson by the start of lesson bell for tutor time, period 3 (after break) and period 5 (after lunch)
- You are expected to arrive with the rest of your class for periods 1, 2 and 4.
- If you have a genuine reason for being late you **must** have a note from home or from a member of staff, otherwise you will be marked late.
- If you are late three times in a week, you will be sent to Refocus.



Uniform, jewellery, equipment

From September 2023



Uniform



- Charcoal grey plain full-length trousers
- If a belt is to be worn, this must be black and suitable for school
- Maroon School Uniform Polo Shirt with House Colour Trim and School Logo
- Black socks only
- Hats, scarves and coats, if worn, should be plain, without logos or patterns. Denim or leather jackets are not permitted.
- Hoodies: Academy hoodies (House PE hoodies, Maroon Academy hoodies, or Grey Year 11 hoodies) are acceptable to wear as part of the Academy's uniform. Hoods must be worn down. Other hoodies (those not issued by the Academy, or "trip" hoodies) are not acceptable and should not be worn to school.

Shoes



- Plain black flat polishable shoes. Must be all black, with no coloured logos or flashes. Shoes should enclose and protect toes and heels for health and safety reasons. Boots, canvas or fabric shoes or trainers are not allowed. Air Force or similar plain black trainers with uppers that are “polishable” are acceptable as school shoes, as are any plain black polishable shoes. Trainers with fabric uppers, or trainers with white or coloured logos or flashes, are not acceptable.

Jewellery



- Jewellery: students are permitted a watch and a ring. Piercings in the ear and/or nose must be studs only for health and safety reasons. Hoops, rings, dangly, spiked, chain link or spacer style earrings or nose piercings are not permitted. No other piercings are allowed (e.g. tongue or other parts of the body). All piercings must be removed or covered with a plaster when taking part in PE or Dance. All watches of any kind must be removed during exams.
- Make up: make up is not permitted in Years 7 or 8. In Years 9-11 make up, if worn, should be discreet. Nail varnish, false nails and false eyelashes are not permitted.

What if we get it wrong?



- **Incorrect uniform:** offered correct uniform to wear - behaviour point issued for incorrect uniform
- **Incorrect jewellery:** will be confiscated for collection at the end of the day - behaviour point issued for incorrect uniform
- If it cannot be removed (e.g. nails), you will be placed in Refocus until it can be sorted out with home.

Mobile phones



- **Mobile phones:** we will be including AirPods and earphones and earbuds (etc) in the definition of “mobile phone”
- If your mobile phone or AirPods, earphones, earbuds etc are seen or heard during the school day - from your arrival on the site through to when you are dismissed from your classroom - it/they will be confiscated and a behaviour point issued
- If this is in social time you will also be sent to Time-Out for a breach of social time expectations

Equipment



Every day, students are expected to bring:

- Essential Equipment:
 - Two Black pens
 - Two Sharp pencils
 - Rubber
 - Ruler
 - Scientific Calculator (Casio fx-85GTCW preferred)
 - Reading book
 - Planner with timetable
- Desirable equipment:
 - One Purple Pen
 - One Green Pen
 - Protractor
 - Pair of compasses
 - Set of coloured pencils
 - Glue stick
 - Set of four highlighters
 - Water bottle (reusable)

Equipment



Every day, students are expected to bring:

- Essential Equipment:

- Two Black pens
- Two Sharp pencils
- Rubber
- Ruler
- Scientific Calculator (Casio fx-85GTCW preferred)
- Reading book
- Planner with timetable
- Pencil case

- Desirable equipment:

- One Purple Pen
- One Green Pen
- Protractor
- Pair of compasses
- Set of coloured pencils
- Glue stick
- Set of four highlighters
- Water bottle (reusable)



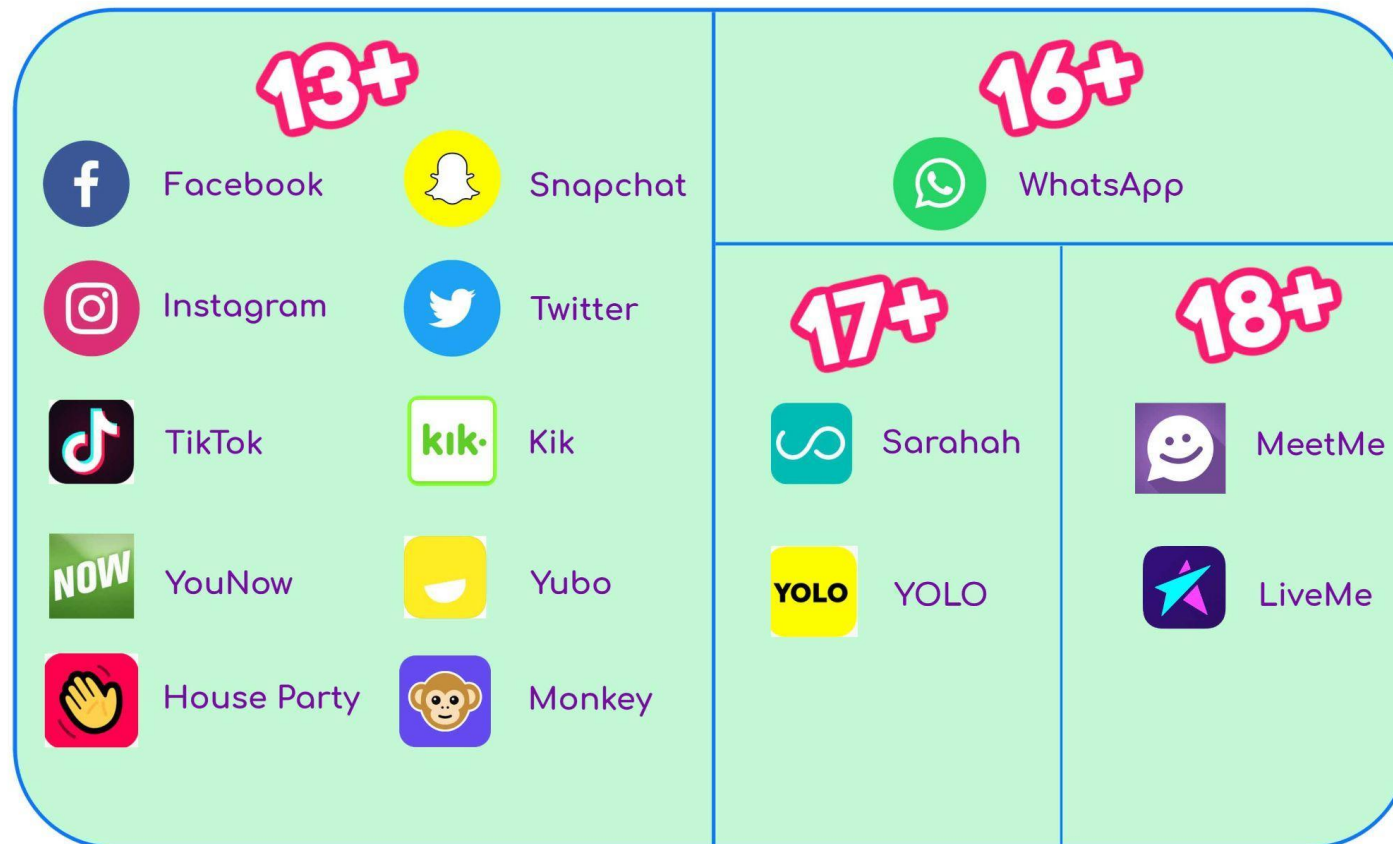
Staying safe and healthy



Social media



APPS AND THEIR AGE RATINGS



KINDNESS

CURIOSITY

DETERMINATION

Friendships and Bullying



- The majority of fallings out and bullying concerns are occurring over social media and continue in school.
- Sometimes they are within a learning group - for this reason we do not encourage you to allow your children to set up class social media groups
- Frequently they are cross year group - we encourage you to monitor who your child is accepting into social media groups
- Students are tech savvy and quick to create and post content - they frequently do not stop to think if the content is kind or how it could be misinterpreted.

Behaviour on the buses /walking to or from the academy



- Students should wait at the coach stop in the same manner that they would wait for a public bus
- Students should always be polite to the bus driver and follow their directions/instructions
- Students should never take photos or record other students on the bus as this is a breach of safeguarding
- Students MUST wear their seatbelts
- Student walking to school and those walking from a bus to their home should be mindful that they represent Churchill Academy & Sixth Form, be respectful of other members of the community, and ensure they are positive ambassadors for the school.

What is sexting / “nudes”/youth produced sexual imagery?



The sending of provocative or sexual photos, images, messages or videos using a mobile phone or posting online.



KINDNESS

CURIOSITY

DETERMINATION

The Law

If you're under 18 it's illegal to:

Take - INCLUDING SOMEONE TAKING IMAGES OF THEMSELVES

Hold - HAVE AN INDECENT IMAGE OF SOMEONE UNDER 18)

Share - (AN INDECENT IMAGE TO SOMEONE UNDER 18 TO ANOTHER PERSON)

An 'indecent' picture of yourself, or to look at or share someone else's. If it's naked, a topless girl or a boy's picture that contains genitals or sex acts it will be 'indecent' including provocative underwear shots.



DON'T FORGET, IT'S NOT JUST ADULTS
WHO GO ON
THE SEX OFFENDERS REGISTER

KINDNESS

CURIOSITY

DETERMINATION

6 Benefits of a Good Night's Sleep

by @inner_drive | www.innerdrive.co.uk

 Better Concentration

 Better Memory and Recall

 Aids Creativity

 Helps You Make Better Decisions

 Reduced Focus on Negative Things



Stronger Immune System

9 Common Sleep Mistakes

by @inner_drive | www.innerdrive.co.uk



1

Watching TV right up until bedtime



2

Long naps in the day



3

Killing time online



4

Different bedtimes each night



5

Drinking tea, coffee, cola or energy drinks late at night



6

Waiting to fall asleep before going to bed



7

Being on your phone in bed



8

Staying in bed when unable to sleep



9

Overthinking tomorrow



Thank you

We will be around to answer any questions you may have

